



ChaseBuchanan

Stoneleigh Drive, Barrs Court, Bristol

£270,000

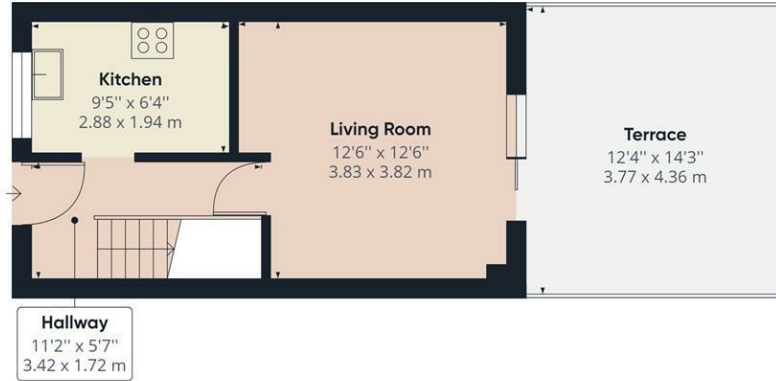
- TWO GENEROUS BEDROOMS • TERRACED
- OFF ROAD PARKING X 2 • CLOSE TO LOCAL AMENITIES
- ENCLOSED REAR GARDEN

SOLD WITHIN A WEEK!!

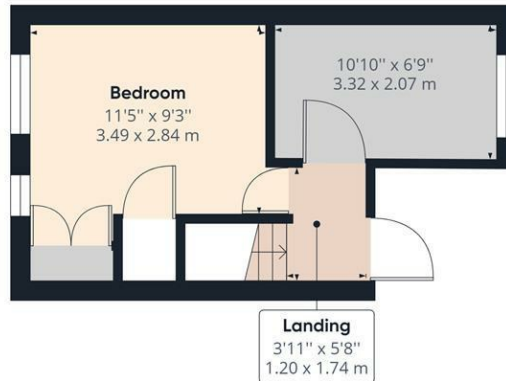
Ideal for first time buyers, investors or downsizers, this spacious two bedroom home is situated in the heart of Barrs court and in walking distance to local amenities and the popular Barrs Court primary school.

This well presented home comprises of hallway, kitchen, lounge/dining room with doors leading out to the rear garden. Upstairs you'll find two bedrooms and a family bathroom. Outside there are two parallel parking spaces and enclosed rear garden.





Ground Floor



Floor 1

Approximate total area⁽¹⁾

496.67 ft²
46.14 m²

(1) Excluding balconies and terraces

While every attempt has been made to ensure accuracy, all measurements are approximate, not to scale. This floor plan is for illustrative purposes only.

GIRAFFE360

